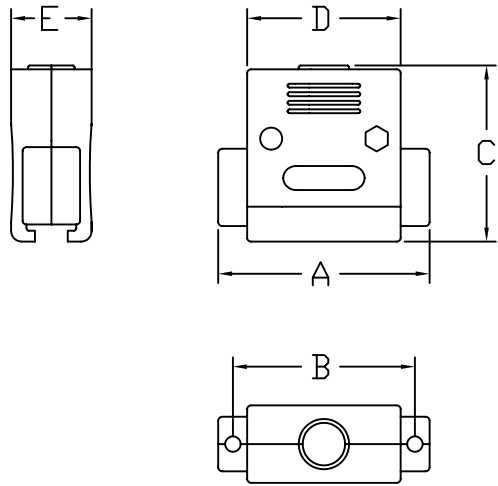
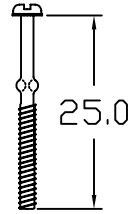


REVISION	DESCREPTION	DATE	APPD
0	SET UP	MAR/17/2000	C.Y.LIN

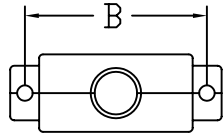
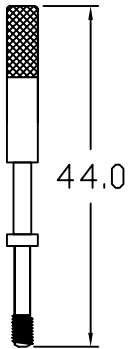
HC 3000 Serie



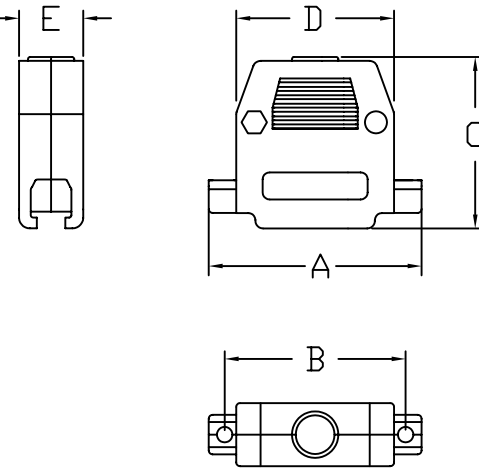
Short screw



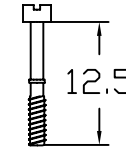
Long screw



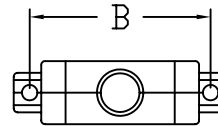
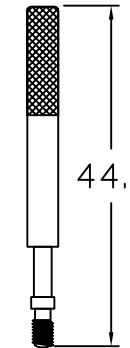
HC 3100 Serie



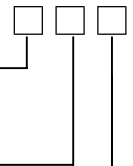
Short screw



Long screw



HC 3000 & HC 3100 -



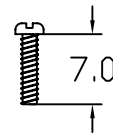
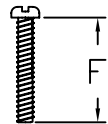
SCREW TYPE
 0 =Short screw (4-40 thread)
 1 =Long screw (4-40 thread)

NO. OF CONTACT
 1=9Pin
 2=15Pin
 3=19Pin
 4=23Pin
 5=25Pin
 6=37Pin
 7=50Pin

HOOD TYPE
 Blank=Grey color hood
 Bk=Black color hood
 C=Chromate plated hood

KITS CONSIST OF a~d :
 a. 12.0~16.0mm 4-40 thread screw 2pcs
 b. Nut 2pcs
 c. 7.0mm 4-40 thread screw 2pcs
 d. S/R 2pcs

KITS



MATERIAL HOOD : UL 94 HB ABS						
3000 Dimension (mm)				Tolerance : ±0.2		
Position	A	B	C	D	E	F
9	33.0	25.0	46.0	18.0	20.0	13.0
15	41.3	33.3	46.0	26.3	20.0	13.0
25	54.6	47.0	45.5	39.7	20.8	13.0
37	71.5	63.5	45.8	56.6	20.2	13.0
50	69.5	61.1	45.2	54.5	20.0	13.0
3100 Dimension (mm)				Tolerance : ±0.2		
Position	A	B	C	D	E	F
9	31.0	25.1	40.0	20.5	16.0	12.0
15	39.6	33.7	36.8	27.8	16.3	13.0
19	33.8		43.0		16.0	13.0
23	50.3	44.3	41.5	39.5	16.4	13.0
25	55.0	46.8	44.3	40.8	16.6	16.0
37	69.5	63.3	53.4	57.6	24.2	16.0



TITLE :
D - SUB CONNECTOR PLASTIC HOOD

DR: RON CHEN CHK: J.T,CHEN APPD: C.Y.LIN

PAGE: 1 OF 1 HC 3000 + HC 3100 Serie