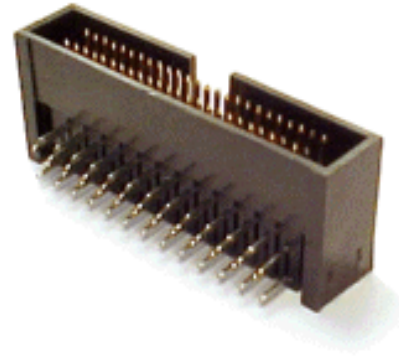


STIFTWANNE

90° abgewinkelt // Raster 1,27 x 2,54mm

STIFTWANNE DER SERIE DC656 ...

abgewinkelte Stiftleiste im Raster 1,27 x 2,54mm
 im Steckbereich und 4 Reihen versetzte Anschlüsse
 im Lötbereich.



Material:

Contact:

Contact Plating:

Solder Tail Plating:

Insulator:

Insulator Color:

Phosphor Bronze

Gold over 0.000100" Nickel Underplating

0.000150" Tin over 0.000100" Nickel Underplating

PBT & 30% glass fiber reinforced thermo plastic; rated UL94V-O

Black

Electrical:

Current Rating:

Contact Resistance:

Insulation Resistance:

Dielectric Strength:

Operation Temperature:

0.5 Amp Max.

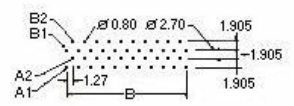
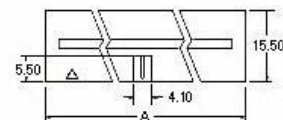
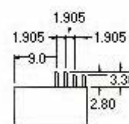
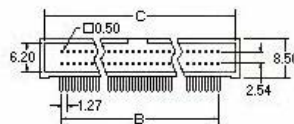
30 Milliohms. Max.

1000 Megohms Min. DC 500V

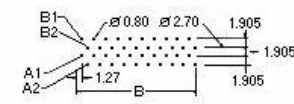
300V AC

-55°C to +105°C

DC656 - Serie



P.C.B. (26, 34, 50 POSITION)



P.C.B. (20, 32, 40, 52, 60, 68, 80, 100 POSITION)

Dimensions				mm		
Numbers	A	B	C			
20	20.95	11.43	18.75			
26	24.76	15.24	22.56			
32	28.57	19.05	26.37			
34	29.84	20.32	27.64			
40	33.65	24.13	31.45			
50	40.00	30.48	37.80			
52	41.27	31.75	39.07			
60	46.35	36.83	44.15			
68	51.43	41.91	49.23			
80	59.05	49.53	56.85			
100	71.75	62.23	69.55			

Irtümer und Änderungen vorbehalten.