

FPC/FCC Connectors

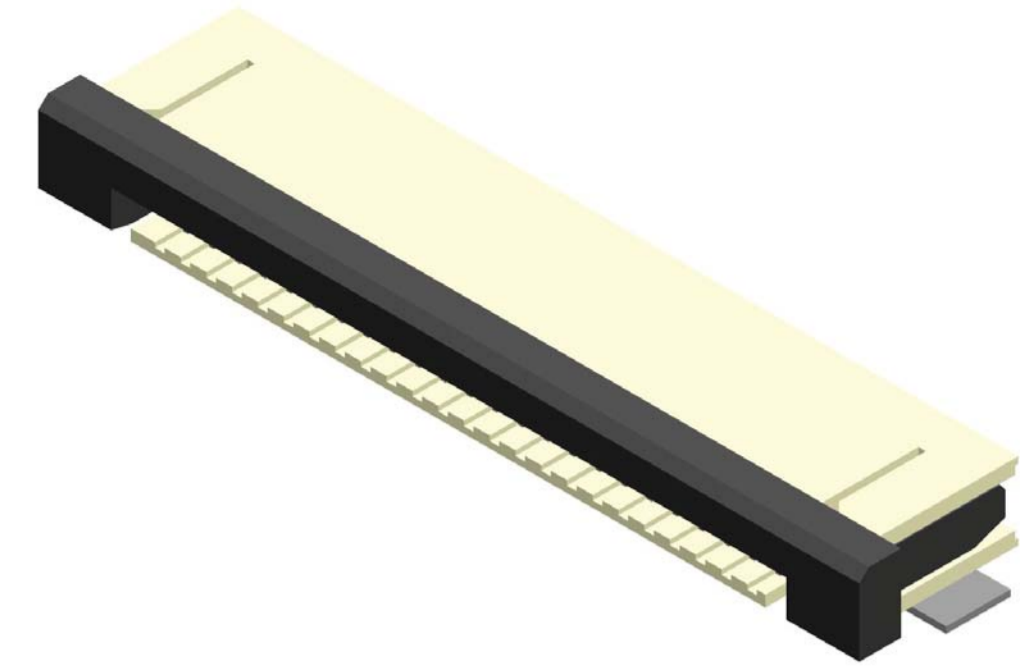
FPC/FCC 0.8mm ZIF SMT Type Side Entry

SPECIFICATION

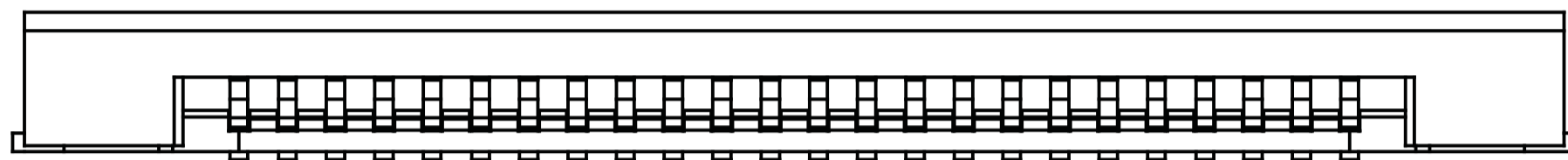
Current Rate: 0.5 AMP
Insulation Resistance: 500MΩ Min.
Contact Resistance: 20mΩ Max.
Dielectric Voltage: 500V AC for one minute
Operation Temperature: -40°C to +105°C

MATERIAL

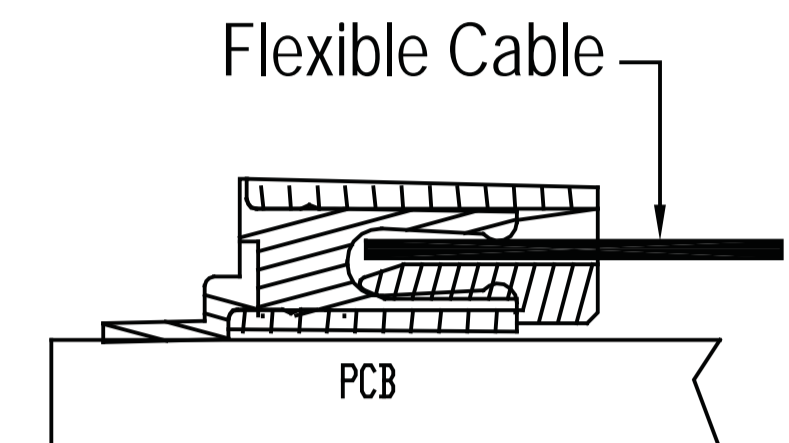
Insulator: Polyester, UL 94V-0
©Standard: LCP
Contact Pin: Copper Alloy
Contact Plated: Tin Plated



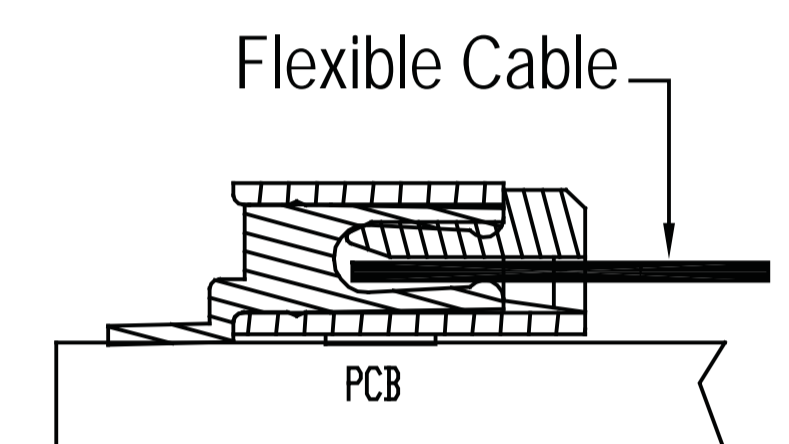
Upper Contact



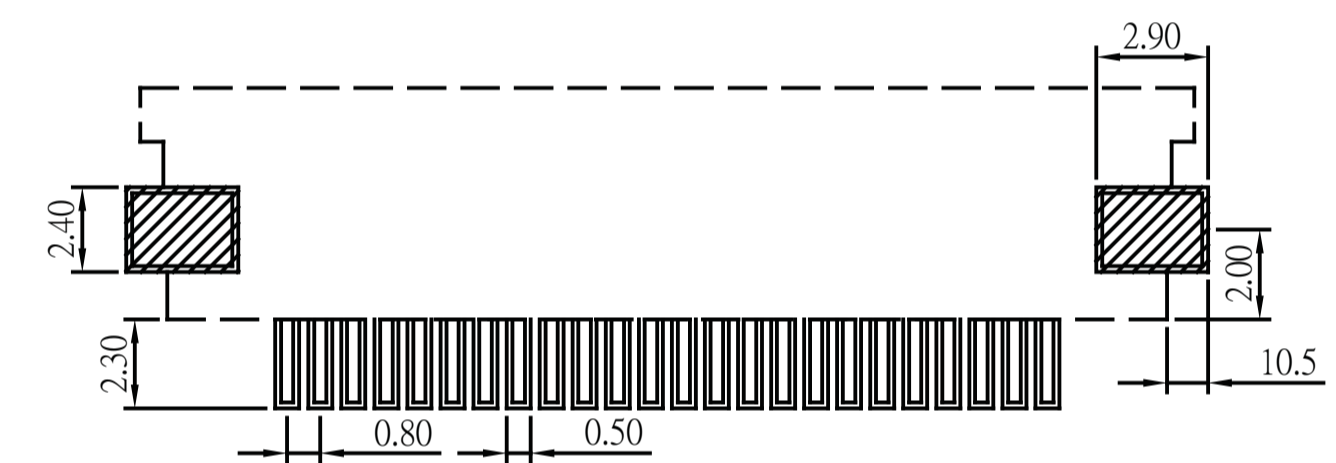
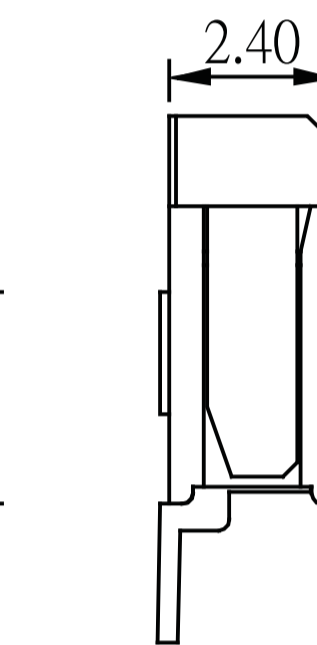
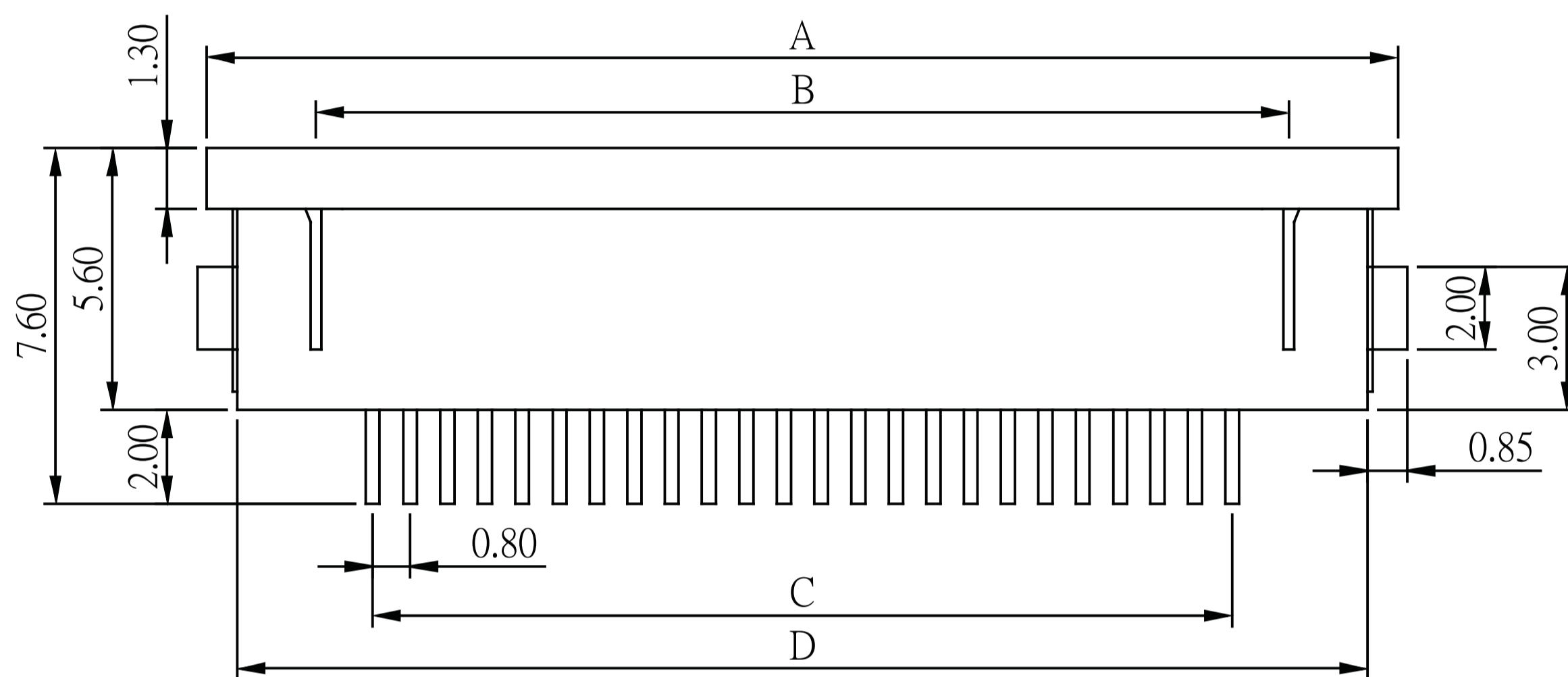
Bottom Contact



Upper Contact



Bottom Contact



Recommended PCB Layout
(PCB TOLERANCE ±0.05)

No. of Contacts	Dim. A	Dim. B	Dim. C	Dim. D	No. of Contacts	Dim. A	Dim. B	Dim. C	Dim. D
4	9.50	4.84	2.40	8.20	18	20.70	16.04	13.60	19.40
5	10.30	5.64	3.20	9.00	19	21.50	16.84	14.40	20.20
6	11.10	6.44	4.00	9.80	20	22.30	17.64	15.20	21.00
7	11.90	7.24	4.80	10.60	21	23.10	18.44	16.00	21.80
8	12.70	8.04	5.60	11.40	22	23.90	19.24	16.80	22.60
9	13.50	8.84	6.40	12.20	23	24.70	20.04	17.60	23.40
10	14.30	9.64	7.20	13.00	24	25.50	20.84	18.40	24.20
11	15.10	10.44	8.00	13.80	25	26.30	21.64	19.20	25.00
12	15.90	11.24	8.80	14.60	26	27.10	22.44	20.00	25.80
13	16.70	12.04	9.60	15.40	27	27.90	23.24	20.80	26.60
14	17.50	12.84	10.40	16.20	28	28.70	24.04	21.60	27.40
15	18.30	13.64	11.20	17.00	29	29.50	24.84	22.40	28.20
16	19.10	14.44	12.00	17.80	30	30.30	25.64	23.20	29.00
17	19.90	15.24	12.80	18.60					

ORDER INFORMATION

